

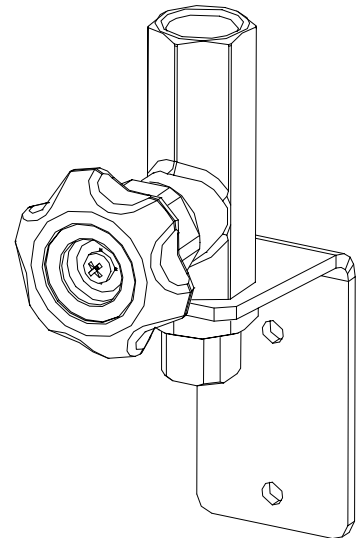
LOW PRESSURE POINT VALVES

Gascon Systems presents a **new range** of low pressure point valves. They are specifically designed for connection to a gas reticulation system at the point of application where a final system pressure regulator is to be located.

They feature a solid brass gas specific outlet connection and a choice of either a brazing tube inlet nipple or a 1/4" NPT(F) connection into which a Swagelok™ style compression fitting can be fitted. The point valves are fitted with colour coded control knobs.

The point valve is easily mounted to the wall using two 6mm (1/4") screws to secure the robust stainless steel mounting bracket. The standard bracket is designed so that a single stage regulator can be fitted to the point valve. An option of a longer bracket is available if extra clearance from the wall is required, eg. is a dual stage regulator is to be fitted. For applications that require two gases, (eg. oxygen/acetylene or oxygen/LPG for welding), a single common twin point valve mounting bracket can be supplied.

For high purity gas applications the manifold can be chrome plated. If required, inlet compression fittings can be supplied with the G0460 model point valves. Outlet connections other than those listed in the ordering information section can be supplied on request, (eg. CGA or DIN fittings).



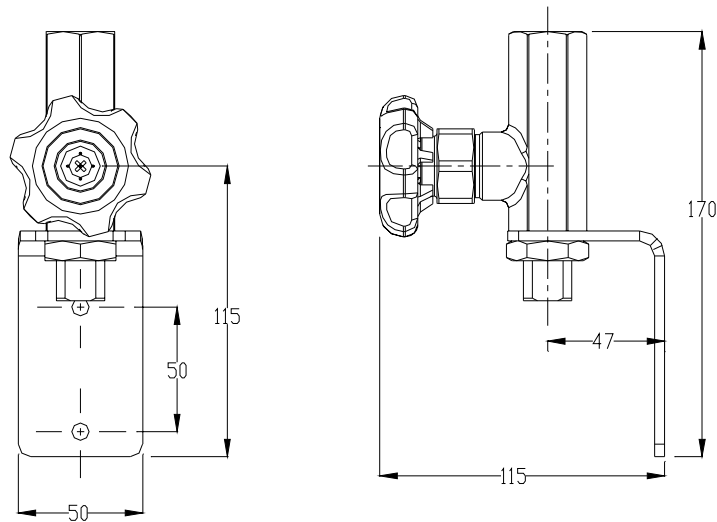
MATERIALS OF CONSTRUCTION

Outlet Block:	Brass
Isolation Valve Body:	Brass
Isolation Valve Seat:	Nickel Silver/Nylon
Isolation Valve Gland:	PTFE
Isolate Valve Knobs:	Flame Retardant Nylon
Mounting Bracket:	Stainless steel

SPECIFICATIONS

Maximum Inlet Pressure:	50 Bar
Inlet Connection:	1/2" tube brazing nipple (G0461 models) 1/4" NPT(F) (G0460 models)
Outlet Connection:	refer table
Temperature Operating Range:	0-60° C
Weight:	1.0 kgs
Basic Dimensions:	50mm x 115mm x 170mm

BASIC DIMENSIONS



ORDERING INFORMATION

Part No	Working Gas	Outlet Fitting	Inlet Fitting	Knob Control
G0460-ACET	Acetylene	Type 20	1/4" NPT(F)	Red
G0460-AIR	Air	Type 60	1/4" NPT(F)	Blue
G0460-CO2	Carbon Dioxide	Type 30	1/4" NPT(F)	Green Grey
G0460-FUEL	Fuel & Fuel Gas Mixtures	Type 20	1/4" NPT(F)	Red
G0460-INERT ^{#1}	Inert & Inert Gas Mixtures	Type 10	1/4" NPT(F)	Blue
G0460-LPG	LPG (Propane)	Type 21	1/4" NPT(F)	Orange
G0460-N2	Nitrogen	Type 50	1/4" NPT(F)	Blue
G0460-N2O	Nitrous Oxide	Type 30	1/4" NPT(F)	Blue
G0460-OXY	Oxygen	Type 10	1/4" NPT(F)	Black
G0461-ACET	Acetylene	Type 20	1/2" Brazing Nipple ^{#2}	Red
G0461-AIR	Air	Type 60	1/2" Brazing Nipple	Blue
G0461-CO2	Carbon Dioxide	Type 30	1/2" Brazing Nipple	Green Grey
G0461-FUEL	Fuel & Fuel Gas Mixtures	Type 20	1/2" Brazing Nipple	Red
G0461-INERT ^{#1}	Inert & Inert Gas Mixtures	Type 10	1/2" Brazing Nipple	Blue
G0461-LPG	LPG (Propane)	Type 21	1/2" Brazing Nipple	Orange
G0461-N2	Nitrogen	Type 50	1/2" Brazing Nipple	Blue
G0461-N2O	Nitrous Oxide	Type 30	1/2" Brazing Nipple	Blue
G0461-OXY	Oxygen	Type 10	1/2" Brazing Nipple	Black
G0464	Oxygen/Acetylene	Type 10/Type 20	1/4" NPT(F)	Black/Red
G0465	Oxygen/LPG	Type 10/Type 21	1/4" NPT(F)	Black/Orange
G0462	Oxygen/Acetylene	Type 10/Type 20	1/2" Brazing Nipple ^{#2}	Black/Red
G0463	Oxygen/LPG	Type 10/Type 21	1/2" Brazing Nipple	Black/Orange

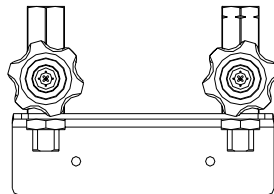
#2 – standard nipples for acetylene are steel, all other gases are brass

- To chrome plate the valve, add a "CHROME" suffix to the above part numbers.
- To have a inlet compression fitting supplied with the valve add the following suffix to the G0460 model (2S = 1/8", 4S = 1/4", 6S = 3/8", 8S = 1/2") unless requested otherwise compression fittings are brass, (except for acetylene model which is supplied with stainless steel fittings)

ORDERING EXAMPLE

G0460-OXY-8S Oxygen low pressure point valve with 1/2" brass inlet

SPECIAL OPTIONS



Twin Mount Plate Models

GASCON
SYSTEMS

Gascon Systems Pty. Ltd. ABN: 74 716 626 338
Unit 11, 1 Bell Street, PRESTON VIC 3072, AUSTRALIA
PH: 61-3-9484 4190 **FX:** 61-3-9484 0368
Email: sales@gascon.com.au
<http://www.gascon.com.au>

0505