

HIGH PRESSURE POINT VALVES

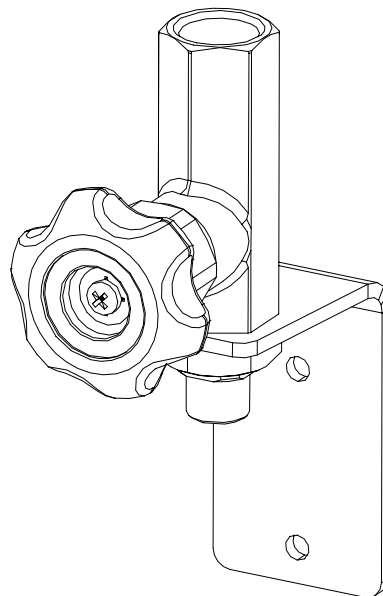
Gascon Systems presents a **new range** of high pressure point valves. They are specifically designed for applications where single gas cylinder is to be used as the supply source for a pipeline system. The valve allow the pipeline regulator to be "hard plumbed" to the pipeline. The cylinder is connected to the point valve via a high pressure flexible lead.

The point valves have gas specific outlet connections, and either right or left hand threaded inlet connections, (left hand for fuel gases, right hand for non fuel gases).

The inlet connections have non-return valves fitted to prevent accidental reverse flow if an empty or partially empty cylinder is connected to the point valve. The point valves are fitted with colour coded control knobs.

The point valve is easily mounted to the wall using two 6mm (1/4") screw via a robust stainless steel mounting bracket. The standard bracket is designed so that a single stage regulator can be fitted to the point valve. An option of a longer bracket is available if extra clearance from the wall is required, eg. a dual stage regulator is to be fitted.

Point valves can be supplied with or without cylinders leads. For high purity gas applications the point valve can be chrome plated and inlet purge valves can be fitted. Outlet connections other than those listed in the ordering information section can be supplied on request, (eg. CGA or DIN fittings).



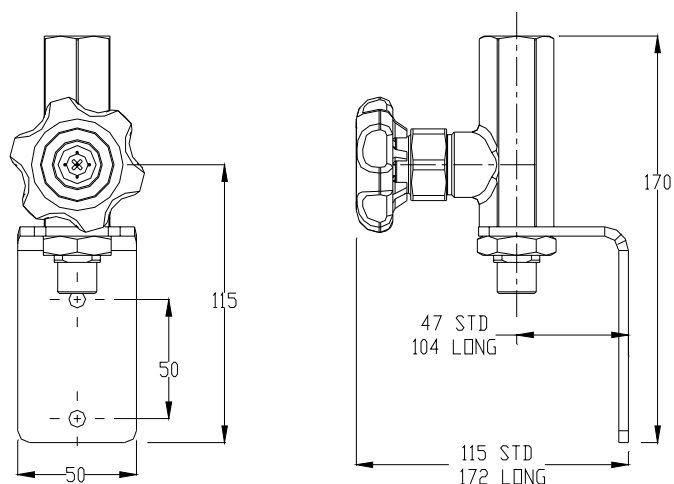
MATERIALS OF CONSTRUCTION

Outlet Block:	Brass
Isolation Valve Body:	Brass
Isolation Valve Seat:	Nickel Silver/Nylon (except for oxygen: Nickel Silver/Monel 400)
Isolation Valve Gland:	PTFE
Isolate Valve Knobs:	Flame Retardant Nylon
Non-Return Valves:	Brass/Stainless Steel (except for oxygen: Brass/Bronze)
Mounting Bracket:	Stainless steel

SPECIFICATIONS

Maximum Inlet Pressure:	200 Bar @ 15° C
Inlet Connection:	3/8" BSP RH for industrial non-fuel gases 3/8" BSP LH for industrial fuel gases
Outlet Connection:	refer table
Temperature Operating Range:	0-60° C
Weight:	1.0 kgs
Basic Dimensions:	50mm x 115mm x 170mm

BASIC DIMENSIONS



ORDERING INFORMATION

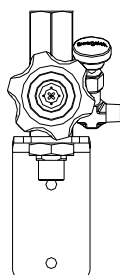
Part No	Working Gas	Outlet Fitting	Inlet Fitting	Knob Control
G0470-ACET	Acetylene	Type 20	3/8" BSP LH	Red
G0470-AIR	Air	Type 60	3/8" BSP RH	Blue
G0470-INERT	Argon/Argoshield	Type 10	3/8" BSP RH	Blue
G0470-CO2	Carbon Dioxide	Type 30	3/8" BSP RH	Green Grey
G0470-FUEL	Fuel & Fuel Gas Mixtures	Type 20	3/8" BSP LH	Red
G0470-INERT	Helium	Type 10	3/8" BSP RH	Blue
G0470-H2	Hydrogen	Type 20	3/8" BSP LH	Red
G0470-INERT	Non Flammable Gas Mixtures	Type 10	3/8" BSP RH	Blue
G0470-N2	Nitrogen	Type 50	3/8" BSP RH	Blue
G0470-N2O	Nitrous Oxide	Type 30	3/8" BSP RH	Blue
G0470-OXY	Oxygen	Type 10	3/8" BSP RH	Black

- To chrome plate the manifold, add a "CHROME" suffix to the above part numbers.
- To include purge valves to the manifold, add a "PURGE" suffix to the above part numbers.

ORDERING EXAMPLE

G0470-H2-CHROME A chrome plated high pressure hydrogen point

SPECIAL OPTIONS



Inlet Purge Valve Option

GASCON
SYSTEMS

Gascon Systems Pty. Ltd. ABN: 74 716 626 338
Unit 11, 1 Bell Street, PRESTON VIC 3072, AUSTRALIA
PH: 61-3-9484 4190 **FX:** 61-3-9484 0368
Email: sales@gascon.com.au
<http://www.gascon.com.au>

0505