

IRV24F Safety Relief Valves

These are a range of spring loaded, direct acting safety relief valves for venting excess pressure from receivers, reticulation system and other equipment.

Designed following the guidelines in ISO 4126-1, they are intended for non-corrosive gases. The seating material is selected according to maximum compatibility with the intended working gas.

They are available with an optional silicone dust cap that prevents dust, water and insects entering the outlet of the valve. A 1/2"NPT(f) "vent-away" adaptor is also available for use with flammable gases, or inert gases in poorly ventilated locations.

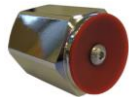
Special versions are made for acetylene service and medical gases.



- Individually serial numbered
- 100% production tested
- Labelled with intended working gas and with month/year of manufacture
- Australian made



vent away adaptor



dust/water cap

Specifications:

- Pressure Range:** 50 – 4,200 kPa
- Inlet Fitting:** 1/4"NPT, 1/2"NPT, 3/4"NPT male, 1/2"BSPP male (o-ring seal) (others available on request)
- Seat Orifice:** ϕ 7mm
 ϕ 12mm (for acetylene)
- Length:** 95mm (115mm with vent away)
- Hex Size:** 1-1/8" A/F
- Weight:** 0.31 kg

Materials:

- Body:** Nickel plated brass
- Seat:** Elastomer (according to working gas)
- Spring:** Stainless steel

FLOW CAPACITY #1

| | | | | | | | | | | | | | | |
|------------------------------------|------|------|------|------|------|------|------|------|------|------|------|------|------|------|
| Cracking Pressure, (kPa) | 100 | 200 | 300 | 400 | 500 | 600 | 700 | 800 | 900 | 1000 | 1100 | 1200 | 1300 | 1400 |
| Flow Capacity, (m ³ /h) | 25 | 38 | 52 | 65 | 78 | 92 | 105 | 118 | 131 | 145 | 158 | 172 | 185 | 192 |
| Cracking Pressure, (kPa) | 1500 | 1600 | 1700 | 1800 | 1900 | 2000 | 2100 | 2200 | 2300 | 2400 | 2500 | 2600 | 2700 | 2800 |
| Flow Capacity, (m ³ /h) | 211 | 225 | 238 | 252 | 265 | 278 | 291 | 305 | 318 | 332 | 347 | 358 | 372 | 385 |
| Cracking Pressure, (kPa) | 2900 | 3000 | 3100 | 3200 | 3300 | 3400 | 3500 | 3600 | 3700 | 3800 | 3900 | 4000 | 4100 | 4200 |
| Flow Capacity, (m ³ /h) | 398 | 412 | 425 | 438 | 452 | 466 | 478 | 493 | 506 | 519 | 530 | 547 | 560 | 573 |

#1 - Flow capacities are based on air flows. For other gases apply appropriate density correction factors. Flow capacities are based on an inlet pressure of 1.2 times the cracking pressure. The size and length of any "vent away" piping may add back pressure to the valve and reduce flow capacity. Flow capacity for the acetylene version with a set pressure of 190 kPa is 85 m³/hr/

ORDERING INFORMATION

| Model | Cracking Pressure | Working Gas | Inlet Fitting | Options |
|--------------------|-------------------|---|--|-------------------------------------|
| IRV24F Basic Model | Pressure in kPa | ACET Acetylene AIR Air AR Argon CO2 Carbon Dioxide CO Carbon Monoxide HE Helium H2 Hydrogen CH4 Methane N2 Nitrogen N2O Nitrous Oxide OXY Oxygen Others by Description | 4M 1/4" NPT male 8M 1/2" NPT male 12M 3/4" NPT male 8G 1/2"BSPP | 17 Vent away adaptor 18 Dust cap |