

Medical Oxygen Yoke Assemblies

Gascon Systems has a range of different pin indexed yoke assemblies available to assist in the ongoing changes in medical oxygen cylinder valve connections. Starting in September 2009 and ending by June 2011 all larger medical oxygen cylinders will be having their valves changed from the threaded Type 10 (5/8" BSP) connection to the gas specific pin indexed connection. The change will be happening on a state-by-state basis. This change is being co-ordinated by the Australian and New Zealand Industrial Gas Association (ANZIGA). Further details about the exact dates and progress of this change should be available from your gas supplier.

Caution:

The connection thread on these fittings is 1/4" NPT male. This connection type is very common in Australia, but some older equipment or imported equipment may use another type of connection thread. Do not attempt to use these fittings on equipment that does not have a 1/4" NPT connection. Some older equipment may not be suitable to operate at today's allowable cylinder filling pressures. Fitting of new yoke inlet connections should only be done if it can be clearly shown that the equipment has a rated work inlet pressure of at least 200 bar (20,000 kPa @ 15°C). Seek further advice if unsure. Use appropriate oxygen equipment procedures when working on oxygen equipment.

Standard Yoke

The "fixed" non-rotatable yoke design is the standard design commonly used on medical equipment. This type of yoke assembly is also available for other medical gases.

Part No G0415

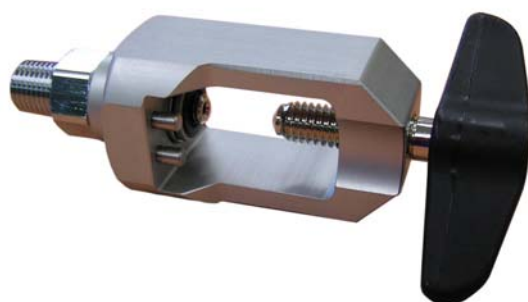
Thread: 1/4" NPT male

Materials:

Yoke body: Anodised aluminium

Yoke Screw: Nickel Plated Brass/Nylon

Filter: Cupro-nickel



Swivel Yoke

The "swivel" yoke design is ideal for applications where it is desirable to be able to rotate the attached piece of equipment with respect to the cylinder valve outlet. This type of yoke assembly is also available for other medical gases.

Part No G0415SW

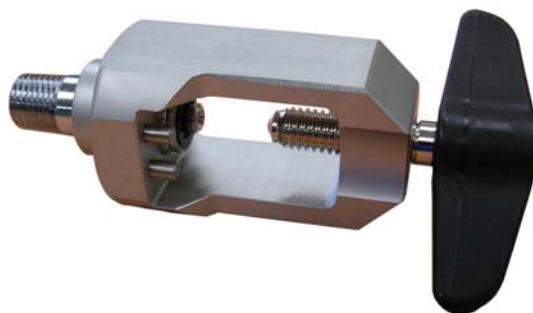
Thread: 1/4" NPT male

Materials:

Yoke body: Anodised aluminium

Yoke Screw: Nickel Plated Brass/Nylon

Filter: Cupro-nickel



Brass Yoke

The "brass" yoke assembly is a fixed design position type of yoke connection that is ideal for applications where an aluminium yoke body is not preferred. Such applications include; underground mines, offshore or beach locations. This type of yoke assembly is also available for medical air.

Part No G0415BR

Thread: 1/4" NPT male

Materials:

Yoke body: Nickel plated brass

Yoke Screw: Nickel plated brass

Filter: Bronze

